



LINDEN GROVE
SCHOOL

Return to School Learning Options
2020-2021 School Year

Considerations for Learning Options

- Medical needs of students, families and staff
- Anxiety levels of students, families and staff
- Federal, state and local mandates and recommendations
- What other schools are offering
- Increased costs associated with COVID-19
- Loss of revenue associated with COVID-19
- Meeting needs of parents
- How health and safety mandates are impacting programming on a daily basis at the instructional level

Health and Safety Precautions During COVID-19

- Temperature and symptom checks will occur for every person entering the building
- Masks or face shields will be worn by staff and students in all common areas, such as walking into the building, hallways, and when waiting in line. Masks may be taken off when a student is seated in their assigned seat or when the teacher indicates it's ok to do so
- The goal is for each child to build up the ability to wear a mask for at least 5 consecutive minutes - assistance will be given to help children who are struggling and may have sensory related issues
- Staff will facilitate social distancing of 6 feet apart whenever possible, including arranging classroom furniture and using visuals for student support
- Use of alternative tools and equipment, such as Sneeze Guards (plexiglass) will be used in situations in which social distancing is difficult to maintain or creates complications with the learning experience
- Students will be assigned 1:1 devices and have bins of their own school supplies, art supplies, etc.. Sharing of any supplies will be extremely limited and supplies will be disinfected between usage if they must be shared

Health and Safety During COVID-19 Continued

- Staff and students should stay home when they are sick
- Staff or students who have had a temperature of 100 degrees or higher or symptoms of coughing, shortness of breath or difficulty breathing, chills, muscle pain, sore throat, or new loss of taste or smell must be fever-free and symptom-free for 72 hours prior to being able to returning to school
- Good hygiene etiquette in reference to coughing, sneezing and handwashing will be facilitated throughout the day
- Handwashing and hand sanitizing will happen frequently throughout the day
- Common areas and high touch areas will be cleaned and sanitized on a regular schedule
- Visitors, including parents, will be limited in the building, and we will use virtual conferencing whenever possible
- Recommendations regarding quarantine will be followed according to the Ohio Board of Health in relation to students or staff who test positive for COVID-19 and/or family members who test positive
- Any staff member or student who tests positive for COVID-19 must show a negative test result prior to returning to work/school

Three Learning Options

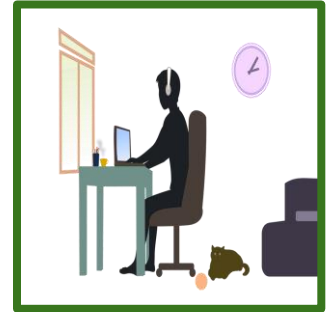
5 Days/Week in Building



Blended Learning: in building ½ time & remote learning ½ time



Distance Learning 5 days/week



Your Child! Your Choice!

LEVEL 1 0–1 Indicators Triggered	LEVEL 2 2–3 Indicators Triggered	LEVEL 3 4–5 Indicators Triggered	LEVEL 4 6–7 Indicators Triggered
Public Emergency Active exposure and spread. Follow all current health orders.	Public Emergency Increased exposure and spread. Exercise high degree of caution. Follow all current health orders.	Public Emergency Very high exposure and spread. Limit activities as much as possible. Follow all current health orders.	Public Emergency Severe exposure and spread. Only leave home for supplies and services. Follow all current health orders.

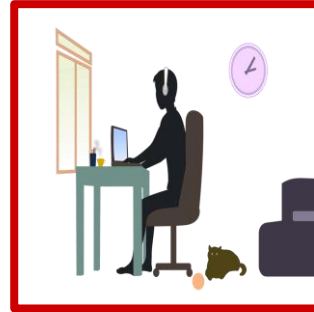
In Person 5 Days/Week



In Person 5 Days/Week



Distance Learning



Distance Learning



Option 1: Learning in building 5 days/week

(switch to Distance Learning during Level 3 and 4 Emergencies or COVID-19 outbreaks within the school))

Option 1: Learning in Building 5 Days/Week

- Parents who are ready for their child to return to the building can choose for their child to return to school 5 days/week.
- To ensure the health and safety of all, if Hamilton County Board of Health moves the county to Level 3 (red) or Level 4 (purple) Emergency Level, all students, regardless of chosen learning plan, will move to Distance Learning until Hamilton County moves back to a Level 1 (yellow) or Level 2 (orange) Emergency Level.
- Typically, on Wednesday afternoons, we are notified of the Emergency Level of the county. The school will move to Distance Learning on the Monday following the notification.
- If there is an **OUTBREAK** of positive COVID-19 cases in the building (students and/or staff), as defined by the Ohio Board of Health, we will temporarily move to Distance Learning within 24 hours or less

Your Child! Your Choice!

LEVEL 1 0-1 Indicators Triggered	LEVEL 2 2-3 Indicators Triggered	LEVEL 3 4-5 Indicators Triggered	LEVEL 4 6-7 Indicators Triggered
<p>Public Emergency</p> <p>Active exposure and spread. Follow all current health orders.</p>	<p>Public Emergency</p> <p>Increased exposure and spread. Exercise high degree of caution. Follow all current health orders.</p>	<p>Public Emergency</p> <p>Very high exposure and spread. Limit activities as much as possible. Follow all current health orders.</p>	<p>Public Emergency</p> <p>Severe exposure and spread. Only leave home for supplies and services. Follow all current health orders.</p>

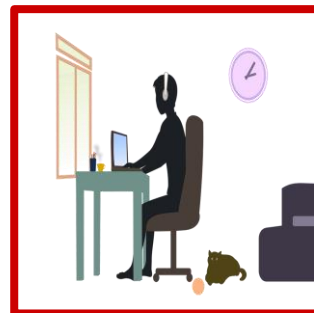
Blended Learning



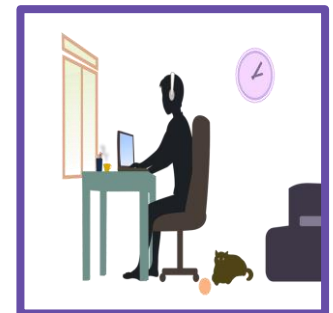
Blended Learning



Distance Learning



Distance Learning



Option 2: Blended Learning: Learning in the building on M,T and e/o W OR e/o W and all Th, F, with remote learning on days not in the building (switch to Distance Learning during Level 3 and 4 Emergencies or during COVID-19 outbreaks within the building)

Option 2: Blended Learning

- Parents who want their child in the building, but to be surrounded by fewer students daily, may choose the Blended Learning option.
- Children participating in Blended Learning will be divided into two groups: Group 1 will attend school on M, T and e/o Wed **with the students who are in the building 5 days/week**. Group 1 students will utilize remote learning on the days they aren't in the building. Group 2 students will be in the building e/o Wed and every Th, F **with the students who are in the building 5 days/week**. Group 2 students will participate in remote learning on the days they aren't in the building. Parents will be able to mark their preference for Group 1 or Group 2 days of the week; we will do our best to accommodate parent preference, giving partiality to families who have other children in different schools on a similar plan.
- Parents who are choosing this option **MUST COMMIT TO ASSISTING THEIR CHILD WITH CLASSWORK AND HOMEWORK** that will be posted in Google Classroom for each day of Remote Learning. This is the work that the student will be missing on the days they are participating in remote learning.
- On remote learning days, students will have the option to participate in their Live Morning Meeting with their homeroom via one link that will be used all year long.
- On days of remote learning, there will be NO posted work for social skills, music, art, PE, Coding or Robotics classes.

Option 2: Blended Learning Continued

- Grades will be taken for assigned work.
- Students will receive a 1:1 device and will need to bring their device back and forth between school and remote learning from home. The device will already be set up for use for the students. Staff will work with each child to assist with independence with using their device. **Parents will be required to attend a virtual Remote Learning training prior to the start of school.**
- To ensure the health and safety of all, if Hamilton County Board of Health moves the county to Level 3 (red) or Level 4 (purple) Emergency Level, all students, regardless of chosen learning plan, will move to Distance Learning until Hamilton County moves back to a Level 1 (yellow) or Level 2 (orange) Emergency Level.
- Typically, on Wednesday afternoons, we are notified of the Emergency Level of the county. The school will move to Distance Learning on the Monday following the notification.
- If there is an **OUTBREAK** of positive COVID-19 cases in the building (students and/or staff), as defined by the Ohio Board of Health, we will temporarily move to Distance Learning within 24 hours or less.

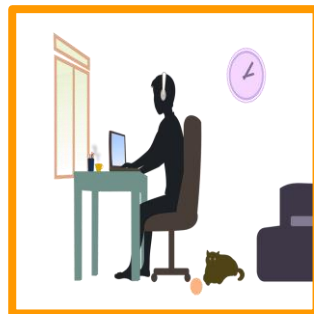
Your Child! Your Choice!

LEVEL 1 0–1 Indicators Triggered	LEVEL 2 2–3 Indicators Triggered	LEVEL 3 4–5 Indicators Triggered	LEVEL 4 6–7 Indicators Triggered
Public Emergency Active exposure and spread. Follow all current health orders.	Public Emergency Increased exposure and spread. Exercise high degree of caution. Follow all current health orders.	Public Emergency Very high exposure and spread. Limit activities as much as possible. Follow all current health orders.	Public Emergency Severe exposure and spread. Only leave home for supplies and services. Follow all current health orders.

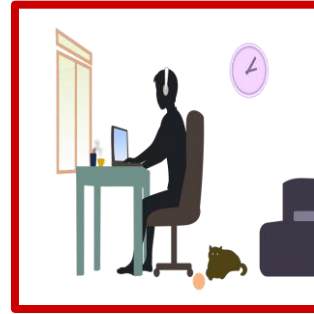
Distance Learning



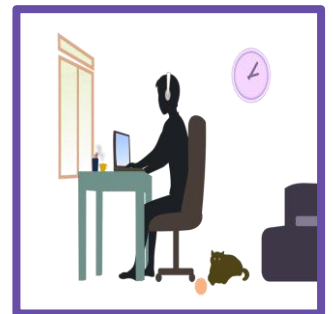
Distance Learning



Distance Learning



Distance Learning



Option 3: Distance Learning 5 days/week (regardless of emergency level indicated by the county)

Option 3: Distance Learning 5 Days/Week

- Students will receive a 1:1 device during Distance Learning, and the device will already be set up for use for the students. **Students and parents will be required to attend a virtual Distance Learning training prior to the start of school.**
- When choosing Distance Learning, families must commit to Distance Learning for the entire trimester, but can change to Blended Learning or Learning in the Building 5 days/week at the beginning of each new trimester.
- All learning will be posted in Google Classroom. Students will generally follow the curriculum of their “in building” classmates for science and social studies classes. Depending on the specific needs of the students and which specialized programs that child typically uses will determine the curriculum used for reading, spelling, writing and math. On-line individualized programming will be utilized consistently.
- Each student will be assigned a teacher and biweekly check ins will be scheduled to assist with specialized programming and/or academic concepts.

Option 3: Distance Learning Continued

- Speech and OT services will be offered via Teletherapy. This may be 1:1 or with a Live group of other students.
- Students participating in Distance Learning have the option to join Live Morning Meetings occurring at the school daily.
- Participation in the specials class(es) the child would participate in if in the building will be optional. If a student is opting in, participation will happen via Google Classroom posts.
- PLEASE NOTE, this type of Distance Learning will have similarities and differences from our distance learning from the spring.
- Grades will be collected for assigned homework.

Your Child! Your Choice!